

IWW - JACKSONVILLE TO MIAMI CUTS BW-1 THRU BW-63 BROWARD COUNTY, FLORIDA HYDROGRAPHIC EXAM SURVEY FY22

SURVEY NOTES

- 1. REFER TO SURVEY NO. 22-074.
- 2. SOUNDINGS ARE IN FEET AND TENTHS AND REFER TO NOAA'S REPORTED MEAN LOWER LOW WATER (MLLW) OF THE 1983-2001 TIDAL EPOCH.
- 3. TIDAL REDUCTIONS FOR RELATING NAVD88 TO MLLW WAS DONE UTILIZING A HYPACK KINEMATIC TIDE DATUM (KTD) MODEL. KTD FILE NAME IS: "BROWARD-MIAMIDADE-MONROE-COLLIER_2018 05 02.KTD".
- 4. ALL ELEVATIONS ARE BELOW THE CHART DATUM UNLESS PRECEDED BY A (+) SIGN.
- 5. PLANE COORDINATES ARE BASED ON THE TRANSVERSE MERCATOR PROJECTION FOR THE EAST ZONE OF FLORIDA AND REFERENCED TO NORTH AMERICAN DATUM OF 1983 (NAD83).
- 6. ALL STATIONING REFERS TO THE CENTERLINE OF THE CHANNEL.
- 7. THIS SURVEY WAS PERFORMED USING FLORIDA PERMANENT REFERENCE NETWORK (VRS FOR REAL-TIME KINEMATIC (RTK) GPS POSITIONING).
- 8. DEPTHS DEPICTED BY THIS SURVEY ARE REFERENCED TO MLLW, TIDAL EPOCH 1983-2001 AS REPORTED BY THE NATIONAL OCEANIC AND ATMOSPHERIC ADMINISTRATION (NOAA). NOAA'S VDATUM MODEL WAS USED AND CALIBRATED TO THE PUBLISHED MLLW HEIGHTS OF THE BENCHMARK SITES SPECIFIED BELOW:
NOAA TIDAL STATION "872 2859 3" FOR NORTH END (NGS PID: AD5848)
NOAA TIDAL STATION "872 2957 TIDAL 2" FOR SOUTH END (PID: AD5844)
VERTICAL MEASUREMENTS WERE MADE USING A R2SONIC 2024 MULTI-BEAM SENSOR OPERATING AT 240 KHZ (HIGH FREQUENCY) AND AN EDGE-TECH R205 MULTIPHASE ECHO SOUNDER OPERATING AT 550 KHZ. ALL SOUNDINGS SHOWN ARE IN HIGH FREQUENCY.

VESSEL	DATE OF SURVEY	CUT
SB-52	21 MAR 2022	BW-52 THRU BW-63
SB-52	22 MAR 22	BW-28 TO BW-52
SB-44	13 APR 2022	BW-1 TO BW-28

- 9. AIDS TO NAVIGATION WERE LOCATED DURING THIS SURVEY.
- 10. THE INFORMATION DEPICTED ON THIS MAP REPRESENTS THE RESULTS OF SURVEYS MADE ON THE DATES INDICATED ABOVE AND CAN ONLY BE CONSIDERED AS INDICATING THE GENERAL CONDITIONS AT THAT TIME. THIS CHART IS SOLELY FOR THE DISTRIBUTION OF AVAILABLE DEPTHS AT THE TIME OF THE SURVEY.
- 11. SURVEY ACCURACY PERFORMANCE STANDARDS, QUALITY CONTROL, AND QUALITY ASSURANCE REQUIREMENTS WERE FOLLOWED DURING THIS SURVEY IN ACCORDANCE WITH USACE EM 1110-2-1003, HYDROGRAPHIC SURVEYING, 30 NOV 2013.

	MONUMENT
	LIGHTED BEACON
	GREEN DAYBEACON
	RED DAYBEACON
	RED LIGHTED BUOY
	GREEN LIGHTED BUOY
	CAN BUOY
	NUN BUOY
	TIDE STAFF
8	PROJECT DEPTH

US Army Corps of Engineers
Jacksonville District

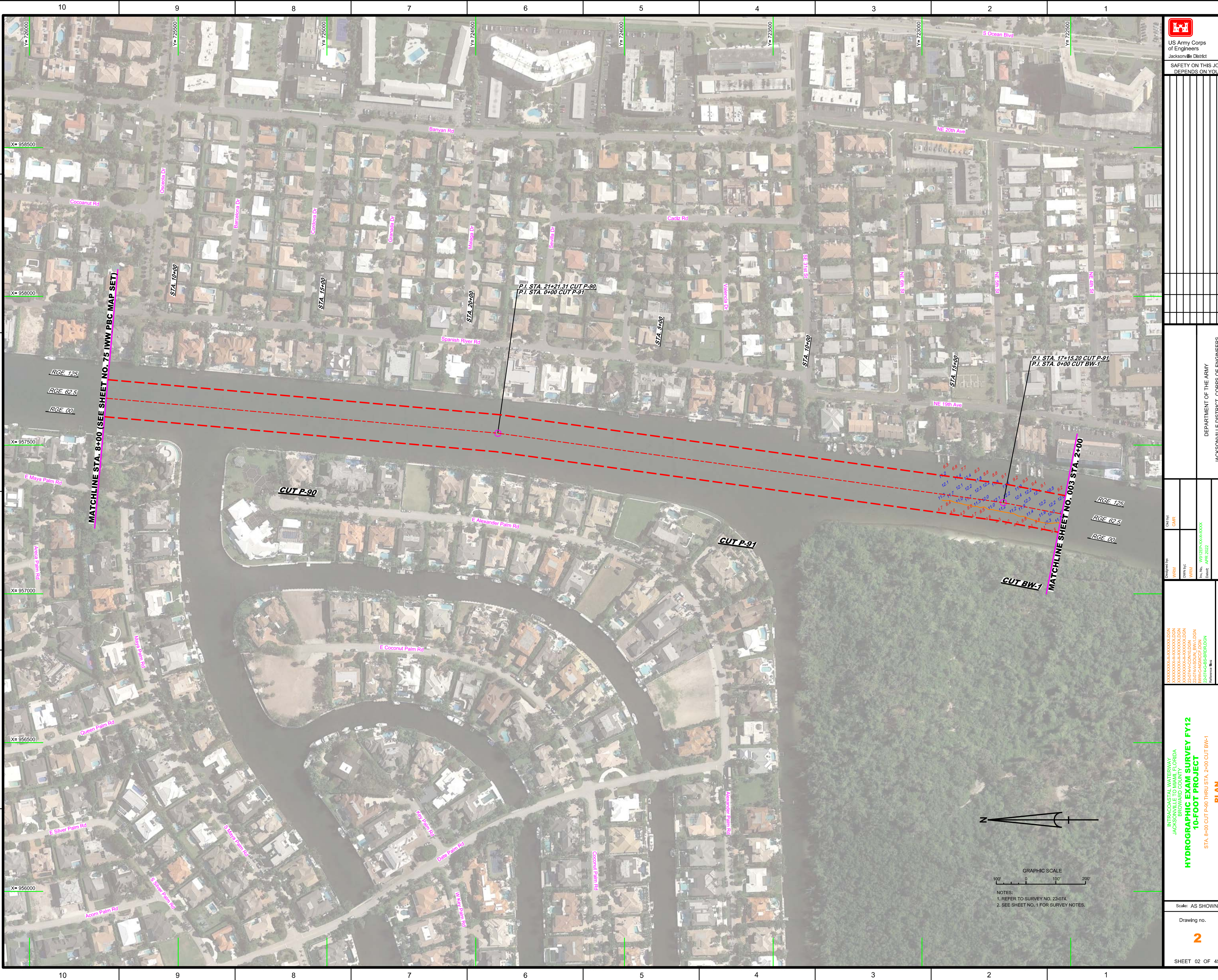
SAFETY ON THIS JOB
DEPENDS ON YOU

DEPARTMENT OF THE ARMY
JACKSONVILLE DISTRICT, CORPS OF ENGINEERS
JACKSONVILLE, FLORIDA

INTRACOASTAL WATERWAY
JACKSONVILLE TO MIAMI, FLORIDA
BROWARD COUNTY
HYDROGRAPHIC EXAM SURVEY FY22
10-FOOT PROJECT
INDEX, LOCATION AND VICINITY
MAP

Scale: AS SHOWN
Drawing no. **1**

SHEET 01 OF 45



US Army Corps of Engineers	
Jacksonville District	
SAFETY ON THIS JOB DEPENDS ON YOU	

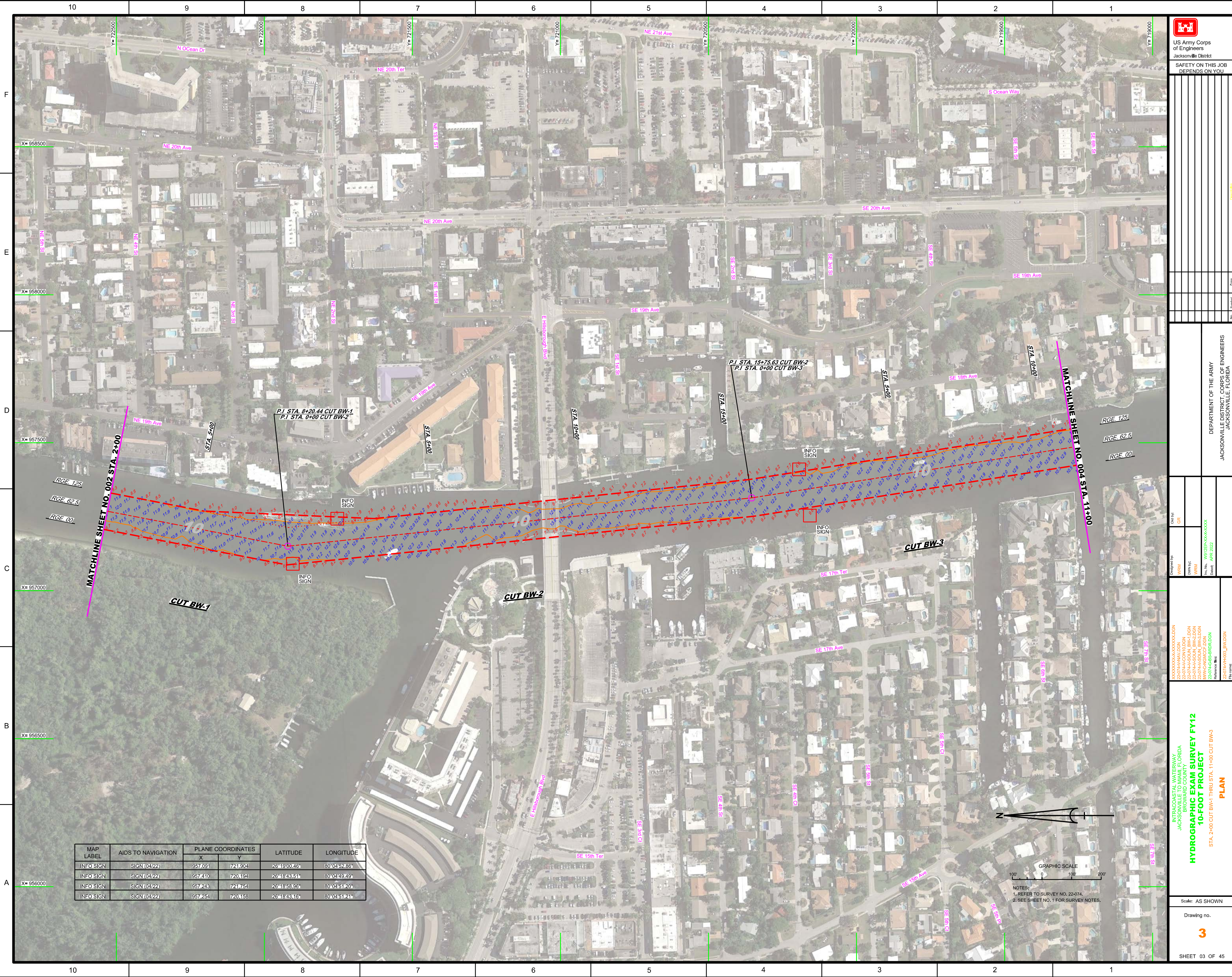
DEPARTMENT OF THE ARMY
 JACKSONVILLE DISTRICT, CORPS OF ENGINEERS
 JACKSONVILLE, FLORIDA
 Drawn By: GHR
 Checked By: WRM
 Date: APR 2022

INTRACOASTAL WATERWAY
JACKSONVILLE TO MIAMI, FLORIDA
BROWARD COUNTY
10-FOOT PROJECT
PLAN
 STA. 8+00 CUT P-90 THRU STA. 2+00 CUT BW-1
 Reference File: 22-07-HYR02_BW.DGN
 File Name: 22-07-HYR02_BW.DGN

Scale: AS SHOWN
 Drawing no. **2**
 SHEET 02 OF 45



GRAPHIC SCALE
 100' 0' 100' 200'
 NOTES:
 1. REFER TO SURVEY NO. 22-074.
 2. SEE SHEET NO. 1 FOR SURVEY NOTES.



MAP LABEL	AIDS TO NAVIGATION	PLANE COORDINATES		LATITUDE	LONGITUDE
		X	Y		
INFO SIGN	SIGN (0422)	957091	721904	28°19'00.45"	80°04'52.85"
INFO SIGN	SIGN (0422)	957410	720494	28°18'43.51"	80°04'29.43"
INFO SIGN	SIGN (0422)	957243	721754	28°18'53.95"	80°04'51.20"
INFO SIGN	SIGN (0422)	957254	720168	28°18'43.16"	80°04'51.21"

US Army Corps of Engineers
Jacksonville District

**SAFETY ON THIS JOB
DEPENDS ON YOU**

DEPARTMENT OF THE ARMY
JACKSONVILLE DISTRICT, CORPS OF ENGINEERS
JACKSONVILLE, FLORIDA

Drawn by: GRL

Designed by: WRM

Checked by: WRM

File No: 22-074-AH-001

Date: APR 2022

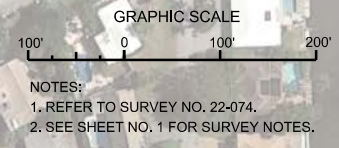
XXXXXXXXXXXXXXXXXXXX
22-074-AH-001
22-074-AH-001
22-074-AH-001
22-074-AH-001
22-074-AH-001
22-074-AH-001
22-074-AH-001

INTRACOASTAL WATERWAY
JACKSONVILLE TO MIAMI, FLORIDA
BROWARD COUNTY
10-FOOT PROJECT
STA. 2+00 CUT BW-1 THRU STA. 11+00 CUT BW3
PLAN

Scale: AS SHOWN

Drawing no. **3**

SHEET 03 OF 45





<p>US Army Corps of Engineers Jacksonville District</p>	
<p>SAFETY ON THIS JOB DEPENDS ON YOU</p>	
<p>DEPARTMENT OF THE ARMY JACKSONVILLE DISTRICT, CORPS OF ENGINEERS JACKSONVILLE, FLORIDA</p>	
<p>Checked By: GR</p>	<p>Designed By: GR</p>
<p>Drawn By: WRM</p>	<p>Reviewed By: WRM</p>
<p>File No: W91355-NA-0004</p>	<p>Date: APR 2022</p>
<p>22-07-AH-CON/UDON 22-07-AH-SOIL_BW-UDON 22-07-AH-SOIL_BW-UDON 22-07-AH-SOIL_BW-UDON 22-07-AH-SOIL_BW-UDON 22-07-AH-SOIL_BW-UDON 22-07-AH-SOIL_BW-UDON</p>	
<p>INTRACOASTAL WATERWAY JACKSONVILLE TO MIAMI, FLORIDA BROWARD COUNTY 10-FOOT PROJECT STA. 11+00 CUT BW-3 THRU STA. 1+00 CUT BW-6 PLAN</p>	
<p>Scale: AS SHOWN</p>	
<p>Drawing no. 4</p>	
<p>SHEET 04 OF 45</p>	

MATCHLINE SHEET NO. 003 STA. 11+00

MATCHLINE SHEET NO. 005 STA. 1+00

CUT BW-3

CUT BW-4

CUT BW-5

CUT BW-6

GRAPHIC SCALE
0 100 200

NOTES:
1. REFER TO SURVEY NO. 22-074.
2. SEE SHEET NO. 1 FOR SURVEY NOTES.

10 9 8 7 6 5 4 3 2 1

Y=716000 Y=715500 Y=715000 Y=714500 Y=714000 Y=713500 Y=713000 Y=712500



MAP LABEL	AIDS TO NAVIGATION	PLANE COORDINATES		LATITUDE	LONGITUDE
		X	Y		
INFO SIGN	SIGN (04/22)	957.405	714.417	26°17'46.29"	80°04'50.00"

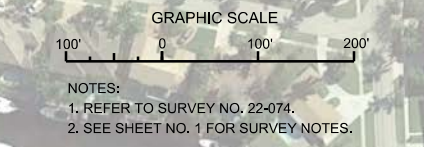
ATLANTIC OCEAN



P.I. STA. 28+12.57 CUT BW-6
P.I. STA. 0+00 CUT BW-7

RGE. 125
X=957500 RGE. 62.5
RGE. 00

RGE. 125
RGE. 62.5
RGE. 00



DEPARTMENT OF THE ARMY
JACKSONVILLE DISTRICT, CORPS OF ENGINEERS
JACKSONVILLE, FLORIDA

Checked by: GHR
Designed by: WRM
Drawn by: WRM
File No.: W91255-000-00000
Date: APR. 2022

XXXXXXXXXXXXXXXXXXXX
XXXXXXXXXXXXXXXXXXXX
XXXXXXXXXXXXXXXXXXXX
22-074-AACON10.DGN
22-074-A-SOLA_BW4.DGN
WVA-CANALCE10.DGN
22-074-G-B-BRID.DGN
Reference File:
22-074-PRGCE_BW.DGN

INTRACOASTAL WATERWAY
JACKSONVILLE TO MIAMI, FLORIDA
BROWARD COUNTY
HYDROGRAPHIC EXAM SURVEY FY22
10-FOOT PROJECT
STA. 1+00 CUT BW-6 THRU STA. 7+00 CUT BW-7
PLAN

Scale: AS SHOWN
Drawing no.
5
SHEET 05 OF 45

MAP LABEL	AIDS TO NAVIGATION	PLANE COORDINATES		LATITUDE	LONGITUDE
		X	Y		
R' 68"	LT-68 (04/22)	957.380	711.786	26°17'20.24"	80°04'50.48"
INFO SIGN	SIGN (04/22)	957.353	711.894	26°17'21.31"	80°04'50.76"

ATLANTIC OCEAN

P.I. STA. 9+64.48 CUT BW-8
P.I. STA. 0+00 CUT BW-9

P.I. STA. 9+87.41 CUT BW-9
P.I. STA. 0+00 CUT BW-10

P.I. STA. 8+26.90 CUT BW-7
P.I. STA. 0+00 CUT BW-8

MATCHLINE SHEET NO. 005 STA. 7+00

MATCHLINE SHEET NO. 007 STA. 11+00

RGE 125
RGE 62.5
RGE 00

RGE 125
RGE 62.5
RGE 00

INFO SIGN

GRAPHIC SCALE
100' 0 100' 200'

NOTES:
1. REFER TO SURVEY NO. 22-074.
2. SEE SHEET NO. 1 FOR SURVEY NOTES.

Checked By: GR
Designed By: WRM
Drawn By: WRM
In Charge: APR 2022

22-074-AV-DGN
22-074-AC-DGN
22-074-AS-DGN
22-074-SS-DGN
22-074-CB-BR-DGN
22-074-PA-DGN
Reference File:
File Name:

INTRACOSTAL WATERWAY
JACKSONVILLE TO MIAMI, FLORIDA
BROWARD COUNTY
10-FOOT PROJECT
HYDROGRAPHIC EXAM SURVEY FY22
PLAN
STA. 7+00 CUT BW-7 THRU STA. 11+00 CUT BW-10

Scale: AS SHOWN

Drawing no.

6

SHEET 06 OF 45

10 9 8 7 6 5 4 3 2 1



US Army Corps of Engineers
Jacksonville District

SAFETY ON THIS JOB
DEPENDS ON YOU

MAP LABEL	AIDS TO NAVIGATION	PLANE COORDINATES		LATITUDE	LONGITUDE
		X	Y		
R°68A	DBN-68A(04/22)	957.309	706.989	26°16'32.74"	80°04'51.63"

ATLANTIC OCEAN



DEPARTMENT OF THE ARMY
JACKSONVILLE DISTRICT, CORPS OF ENGINEERS
JACKSONVILLE, FLORIDA

Checked by: GR
 Designed by: WRM
 Drawn by: WRM
 File No: W91256-000-0000
 Date: APR 2022

INTRACOASTAL WATERWAY
 JACKSONVILLE TO MIAMI FLORIDA
 BROWARD COUNTY
**HYDROGRAPHIC EXAM SURVEY FY22
 10-FOOT PROJECT**
 STA. 11+00 CUT BW-10 THRU STA. 4+00 CUT BW-12
PLAN

Scale: AS SHOWN
 Drawing no.
7
 SHEET 07 OF 45



NOTES:
 1. REFER TO SURVEY NO. 22-074.
 2. SEE SHEET NO. 1 FOR SURVEY NOTES.

10 9 8 7 6 5 4 3 2 1

F

E

D

C

B

A

10 9 8 7 6 5 4 3 2 1

10 9 8 7 6 5 4 3 2 1



US Army Corps of Engineers
Jacksonville District

SAFETY ON THIS JOB
DEPENDS ON YOU

MAP LABEL	AIDS TO NAVIGATION	PLANE COORDINATES		LATITUDE	LONGITUDE
		X	Y		
R*68B*	DBN-68B (04/22)	957.293	704.331	26°16'06.42"	80°04'52.01"
G*69*	LT-69 (04/22)	957.277	703.742	26°16'00.29"	80°04'52.23"
R*70*	DBN-70 (04/22)	956.897	703.091	26°15'54.17"	80°04'56.46"

ATLANTIC OCEAN



F
E
D
C
B
A

F
E
D
C
B
A

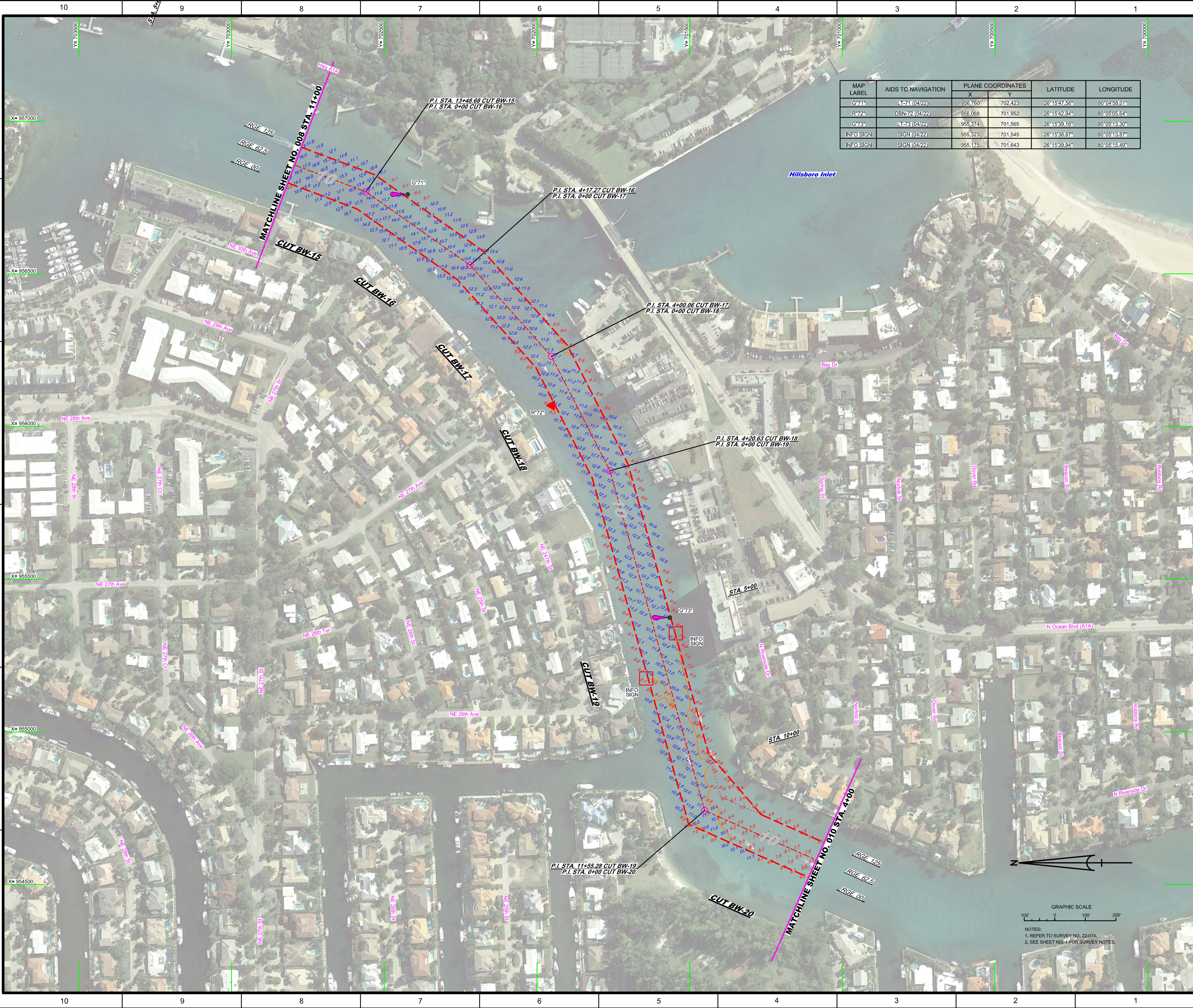
DEPARTMENT OF THE ARMY
JACKSONVILLE DISTRICT, CORPS OF ENGINEERS
JACKSONVILLE, FLORIDA

Checked By: GRL
Designed By: WRM
Drawn By: WRM
File No: W12255-NA-PA-003
Date: APR 2022


INTRACOASTAL WATERWAY
JACKSONVILLE TO MIAMI, FLORIDA
BROWARD COUNTY
HYDROGRAPHIC EXAM SURVEY FY22
10-FOOT PROJECT
STA. 4+00 CUT BW-12 THRU STA. 11+00 CUT BW-15
PLAN

Scale: AS SHOWN
Drawing no. **8**
SHEET 08 OF 45

GRAPHIC SCALE
100' 0 100' 200'
NOTES:
1. REFER TO SURVEY NO. 22-074.
2. SEE SHEET NO. 1 FOR SURVEY NOTES.



MAP LABEL	AIDS TO NAVIGATION	PLANE COORDINATES		LATITUDE	LONGITUDE
		X	Y		
G*71*	LT-71 (04/22)	956,760	702,423	26°15'47.56"	80°04'58.01"
R*72*	DBN-72 (04/22)	956,069	701,952	26°15'42.94"	80°05'05.64"
G*73*	LT-73 (04/22)	955,374	701,565	26°15'39.16"	80°05'13.30"
INFO SIGN	SIGN (04/22)	955,323	701,545	26°15'38.97"	80°05'13.87"
INFO SIGN	SIGN (04/22)	955,175	701,643	26°15'39.94"	80°05'15.49"



US Army Corps of Engineers
Jacksonville District

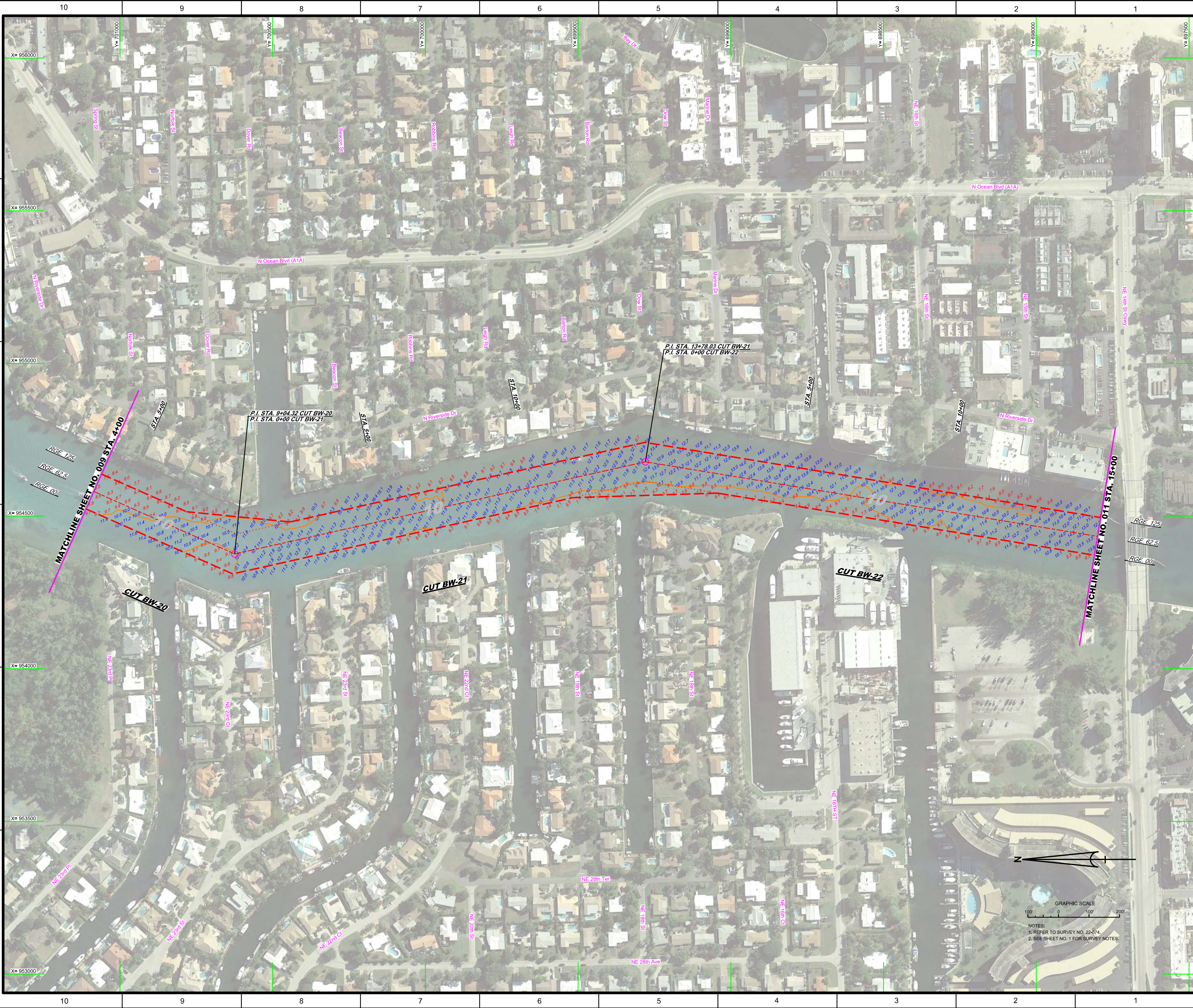
SAFETY ON THIS JOB
DEPENDS ON YOU

DEPARTMENT OF THE ARMY
JACKSONVILLE DISTRICT, CORPS OF ENGINEERS
JACKSONVILLE, FLORIDA

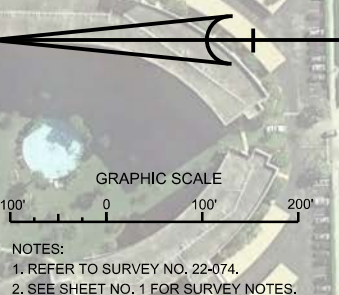
Checked By: GRL
Designed By: WRM
Drawn By: WRM
In Charge: WRM
Date: APR 2022

INTRACOASTAL WATERWAY
JACKSONVILLE TO MIAMI FLORIDA
BROWARD COUNTY
10-FOOT PROJECT
STA. 11+00 CUT BW-15 THRU STA. 4+00 CUT BW-20
PLAN

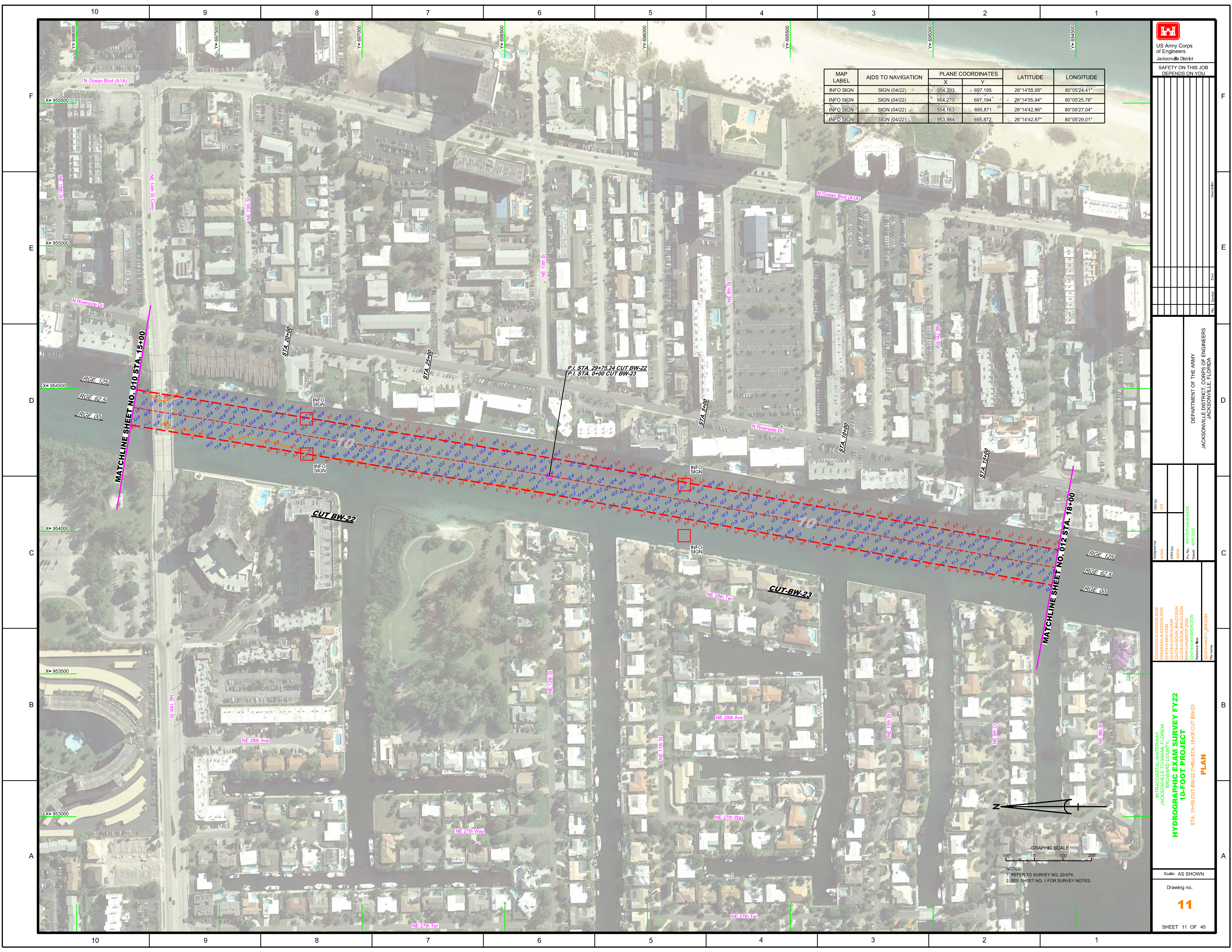
Scale: AS SHOWN
Drawing no. **9**
SHEET 09 OF 45



<p>US Army Corps of Engineers Jacksonville District</p>	
<p>SAFETY ON THIS JOB DEPENDS ON YOU</p>	
<p>DEPARTMENT OF THE ARMY JACKSONVILLE DISTRICT, CORPS OF ENGINEERS JACKSONVILLE, FLORIDA</p>	
<p>Checked By: GHR</p>	<p>Drawn By: WRM</p>
<p>Designed By: WRM</p>	<p>File No: W91255-NA-0003</p>
<p>22-07-A-0001-DON 22-07-A-0001-BW-ADON 22-07-A-0001-BW-S1-DON 22-07-A-0001-BW-S2-DON 22-07-A-0001-BW-S3-DON 22-07-A-0001-BW-S4-DON 22-07-A-0001-BW-S5-DON 22-07-A-0001-BW-S6-DON 22-07-A-0001-BW-S7-DON 22-07-A-0001-BW-S8-DON 22-07-A-0001-BW-S9-DON 22-07-A-0001-BW-S10-DON 22-07-A-0001-BW-S11-DON 22-07-A-0001-BW-S12-DON 22-07-A-0001-BW-S13-DON 22-07-A-0001-BW-S14-DON 22-07-A-0001-BW-S15-DON 22-07-A-0001-BW-S16-DON 22-07-A-0001-BW-S17-DON 22-07-A-0001-BW-S18-DON 22-07-A-0001-BW-S19-DON 22-07-A-0001-BW-S20-DON 22-07-A-0001-BW-S21-DON 22-07-A-0001-BW-S22-DON 22-07-A-0001-BW-S23-DON 22-07-A-0001-BW-S24-DON 22-07-A-0001-BW-S25-DON 22-07-A-0001-BW-S26-DON 22-07-A-0001-BW-S27-DON 22-07-A-0001-BW-S28-DON 22-07-A-0001-BW-S29-DON 22-07-A-0001-BW-S30-DON 22-07-A-0001-BW-S31-DON 22-07-A-0001-BW-S32-DON 22-07-A-0001-BW-S33-DON 22-07-A-0001-BW-S34-DON 22-07-A-0001-BW-S35-DON 22-07-A-0001-BW-S36-DON 22-07-A-0001-BW-S37-DON 22-07-A-0001-BW-S38-DON 22-07-A-0001-BW-S39-DON 22-07-A-0001-BW-S40-DON 22-07-A-0001-BW-S41-DON 22-07-A-0001-BW-S42-DON 22-07-A-0001-BW-S43-DON 22-07-A-0001-BW-S44-DON 22-07-A-0001-BW-S45-DON 22-07-A-0001-BW-S46-DON 22-07-A-0001-BW-S47-DON 22-07-A-0001-BW-S48-DON 22-07-A-0001-BW-S49-DON 22-07-A-0001-BW-S50-DON 22-07-A-0001-BW-S51-DON 22-07-A-0001-BW-S52-DON 22-07-A-0001-BW-S53-DON 22-07-A-0001-BW-S54-DON 22-07-A-0001-BW-S55-DON 22-07-A-0001-BW-S56-DON 22-07-A-0001-BW-S57-DON 22-07-A-0001-BW-S58-DON 22-07-A-0001-BW-S59-DON 22-07-A-0001-BW-S60-DON 22-07-A-0001-BW-S61-DON 22-07-A-0001-BW-S62-DON 22-07-A-0001-BW-S63-DON 22-07-A-0001-BW-S64-DON 22-07-A-0001-BW-S65-DON 22-07-A-0001-BW-S66-DON 22-07-A-0001-BW-S67-DON 22-07-A-0001-BW-S68-DON 22-07-A-0001-BW-S69-DON 22-07-A-0001-BW-S70-DON 22-07-A-0001-BW-S71-DON 22-07-A-0001-BW-S72-DON 22-07-A-0001-BW-S73-DON 22-07-A-0001-BW-S74-DON 22-07-A-0001-BW-S75-DON 22-07-A-0001-BW-S76-DON 22-07-A-0001-BW-S77-DON 22-07-A-0001-BW-S78-DON 22-07-A-0001-BW-S79-DON 22-07-A-0001-BW-S80-DON 22-07-A-0001-BW-S81-DON 22-07-A-0001-BW-S82-DON 22-07-A-0001-BW-S83-DON 22-07-A-0001-BW-S84-DON 22-07-A-0001-BW-S85-DON 22-07-A-0001-BW-S86-DON 22-07-A-0001-BW-S87-DON 22-07-A-0001-BW-S88-DON 22-07-A-0001-BW-S89-DON 22-07-A-0001-BW-S90-DON 22-07-A-0001-BW-S91-DON 22-07-A-0001-BW-S92-DON 22-07-A-0001-BW-S93-DON 22-07-A-0001-BW-S94-DON 22-07-A-0001-BW-S95-DON 22-07-A-0001-BW-S96-DON 22-07-A-0001-BW-S97-DON 22-07-A-0001-BW-S98-DON 22-07-A-0001-BW-S99-DON 22-07-A-0001-BW-S100-DON</p>	
<p>INTRACOASTAL WATERWAY JACKSONVILLE TO MIAMI, FLORIDA BROWARD COUNTY 10-FOOT PROJECT STA. 4+00 CUT BW-20 THRU STA. 15+00 CUT BW-22 PLAN</p>	
<p>Scale: AS SHOWN</p>	
<p>Drawing no. 10</p>	
<p>SHEET 10 OF 45</p>	



NOTES:
1. REFER TO SURVEY NO. 22-074.
2. SEE SHEET NO. 1 FOR SURVEY NOTES.



MAP LABEL	AIDS TO NAVIGATION	PLANE COORDINATES		LATITUDE	LONGITUDE
		X	Y		
INFO SIGN	SIGN (04/22)	954.393	697.195	26°14'55.95"	80°05'24.41"
INFO SIGN	SIGN (04/22)	954.270	697.194	26°14'55.94"	80°05'25.76"
INFO SIGN	SIGN (04/22)	954.163	695.871	26°14'42.86"	80°05'27.04"
INFO SIGN	SIGN (04/22)	953.984	695.872	26°14'42.87"	80°05'29.01"

US Army Corps of Engineers
 Jacksonville District
 SAFETY ON THIS JOB
 DEPENDS ON YOU

DEPARTMENT OF THE ARMY
 JACKSONVILLE DISTRICT, CORPS OF ENGINEERS
 JACKSONVILLE, FLORIDA

Designated by: WRM
 Drawn by: WRM
 Checked by: WRM
 Date: APR 2022

INTRACOASTAL WATERWAY
 JACKSONVILLE TO MIAMI, FLORIDA
 BROWARD COUNTY
**HYDROGRAPHIC EXAM SURVEY FY22
 10-FOOT PROJECT**
 STA. 15+00 CUT BW-22 THRU STA. 18+00 CUT BW-23
PLAN

Scale: AS SHOWN
 Drawing no.



NOTES:
 1. REFER TO SURVEY NO. 22-074.
 2. SEE SHEET NO. 1 FOR SURVEY NOTES.



MAP LABEL	AIDS TO NAVIGATION	PLANE COORDINATES		LATITUDE	LONGITUDE
		X	Y		
INFO SIGN	SIGN (04/22)	953,553	692,360	26°14'08.12"	80°05'34.02"
INFO SIGN	SIGN (04/22)	953,361	692,362	26°14'08.16"	80°05'36.12"

US Army Corps of Engineers
Jacksonville District

SAFETY ON THIS JOB DEPENDS ON YOU

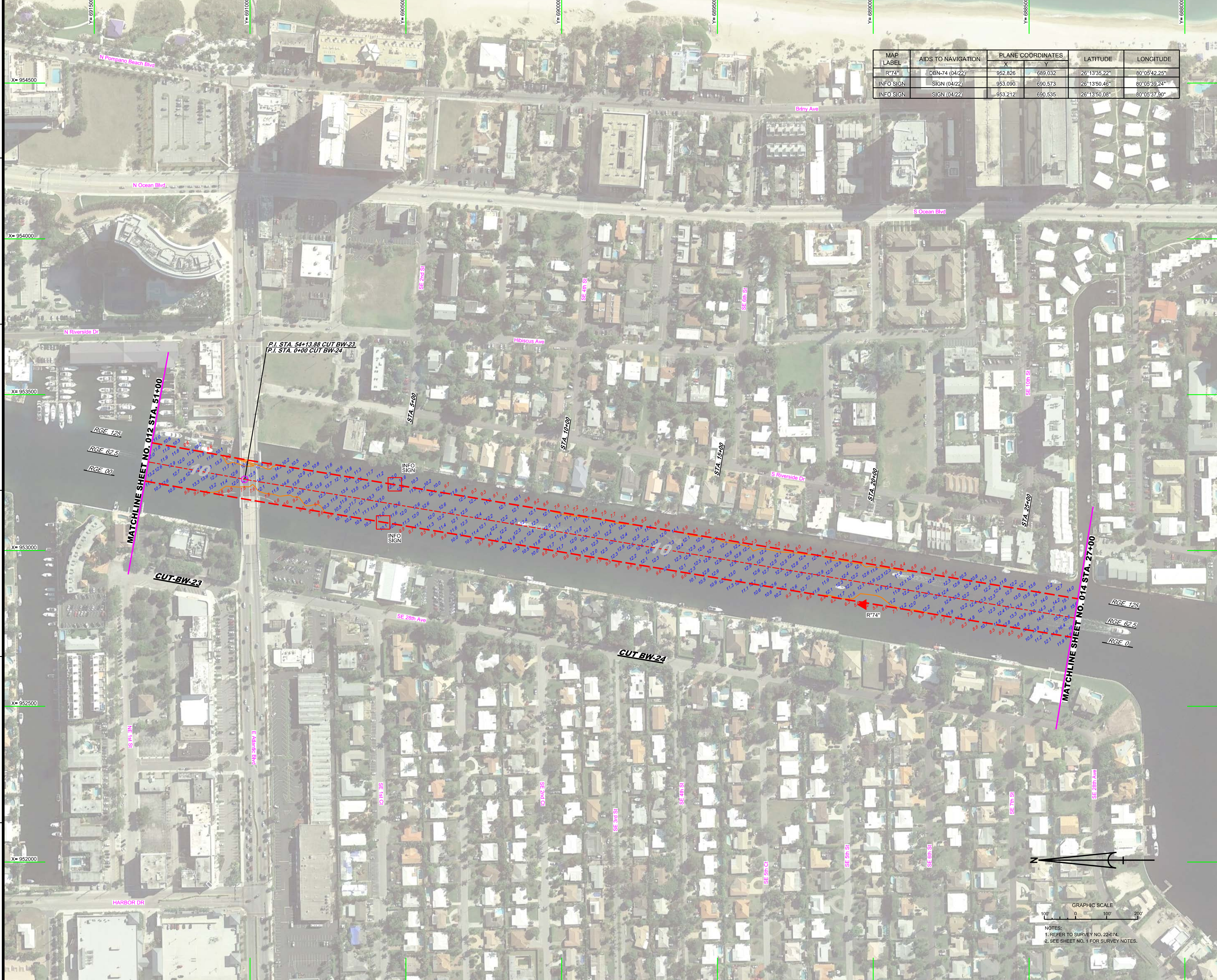
DESIGNED BY: **WRM**
DRAWN BY: **WRM**
IN CHARGE: **WRM**
DATE: **APR 2022**

PROJECT: **INTRA-COASTAL WATERWAY**
JACKSONVILLE TO MIAMI, FLORIDA
BROWARD COUNTY
HYDROGRAPHIC EXAM SURVEY FY22
10-FOOT PROJECT
STA. 18+00 THRU STA. 51+00 CUT BW23
PLAN

Scale: AS SHOWN
Drawing no. **12**
SHEET 12 OF 45



NOTES:
1. REFER TO SURVEY NO. 22-074.
2. SEE SHEET NO. 1 FOR SURVEY NOTES.



MAP LABEL	AIDS TO NAVIGATION	PLANE COORDINATES		LATITUDE	LONGITUDE
		X	Y		
R-74	DBN-74 (04/22)	952.826	689.032	26°13'35.22"	80°05'42.25"
INFO SIGN	SIGN (04/22)	953.090	690.573	26°13'50.46"	80°05'39.24"
INFO SIGN	SIGN (04/22)	953.212	690.535	26°13'50.08"	80°05'37.90"

Rev.	Symbol	Date	Description

DEPARTMENT OF THE ARMY
JACKSONVILLE DISTRICT, CORPS OF ENGINEERS
JACKSONVILLE, FLORIDA

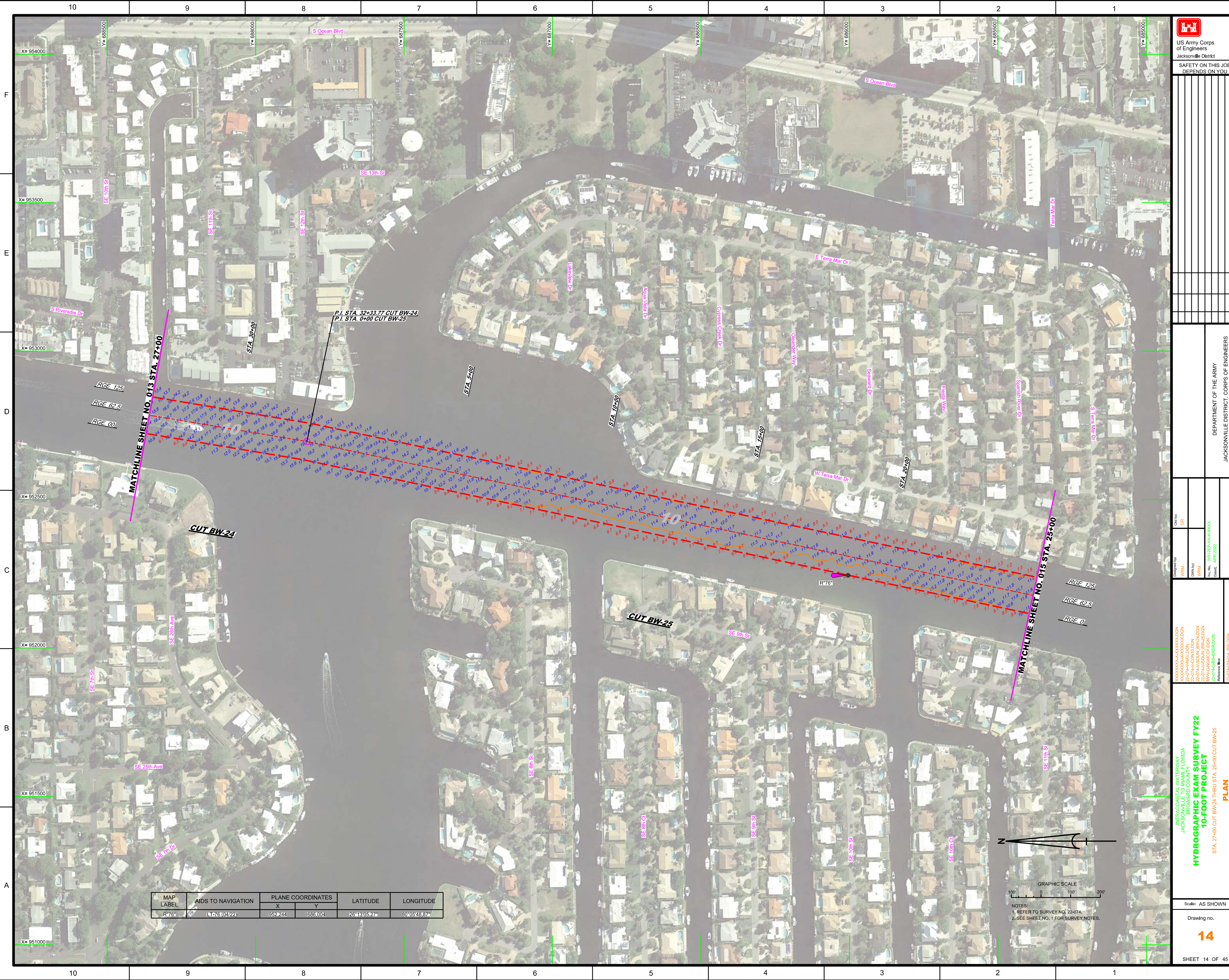
Checked By: GR
Designed By: WRM
Drawn By: WRM
In Use: 08/22/2023
Date: APR 2023

XXXXXXXXXXXXXXXXXXXX
XXXXXXXXXXXXXXXXXXXX
XXXXXXXXXXXXXXXXXXXX
XXXXXXXXXXXXXXXXXXXX
XXXXXXXXXXXXXXXXXXXX
XXXXXXXXXXXXXXXXXXXX
XXXXXXXXXXXXXXXXXXXX
XXXXXXXXXXXXXXXXXXXX
XXXXXXXXXXXXXXXXXXXX
XXXXXXXXXXXXXXXXXXXX

INTRACOASTAL WATERWAY
JACKSONVILLE TO MIAMI, FLORIDA
BROWARD COUNTY
10-FOOT PROJECT
STA. 51+00 CUT BW-23 THRU STA. 27+00 CUT BW-24
PLAN




NOTES:
1. REFER TO SURVEY NO. 22474.
& SEE SHEET NO. 1 FOR SURVEY NOTES.



MAP LABEL	AIDS TO NAVIGATION	PLANE COORDINATES		LATITUDE	LONGITUDE
		X	Y		
R76	L76 (04/22)	952,244	688,004	26°13'05.27"	80°05'48.87"



NOTES:
 1. REFER TO SURVEY NO. 22-074.
 2. SEE SHEET NO. 1 FOR SURVEY NOTES.



US Army Corps of Engineers
 Jacksonville District

SAFETY ON THIS JOB
 DEPENDS ON YOU

DEPARTMENT OF THE ARMY
 JACKSONVILLE DISTRICT, CORPS OF ENGINEERS
 JACKSONVILLE, FLORIDA

Drawn by: GRL
 Checked by: GRL
 Date: APR 2022

INTRACOASTAL WATERWAY
 JACKSONVILLE TO MIAMI, FLORIDA
 BROWARD COUNTY
HYDROGRAPHIC EXAM SURVEY FY22
10-FOOT PROJECT
 STA. 27+00 CUT BW-24 THRU STA. 25+00 CUT BW-25
PLAN


Scale: AS SHOWN

Drawing no.
14

SHEET 14 OF 45



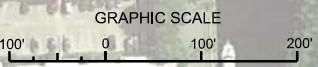
MAP LABEL	AIDS TO NAVIGATION	PLANE COORDINATES		LATITUDE	LONGITUDE
		X	Y		
INFO SIGN	SIGN (04/22)	951.833	683.632	26°12'41.81"	80°05'53.57"


 US Army Corps of Engineers
 Jacksonville District
 SAFETY ON THIS JOB
 DEPENDS ON YOU

DEPARTMENT OF THE ARMY
 JACKSONVILLE DISTRICT, CORPS OF ENGINEERS
 JACKSONVILLE, FLORIDA

Designated By: WRM
 Drawn By: WRM
 Checked: WRM
 Date: APR 2022

INTRACOASTAL WATERWAY
 JACKSONVILLE TO MIAMI, FLORIDA
 BROWARD COUNTY
HYDROGRAPHIC EXAM SURVEY FY22
10-FOOT PROJECT
 STA. 25+00 CUT BW-25 THRU STA. 13+00 CUT BW-26
PLAN



NOTES:
 1. REFER TO SURVEY NO. 22-074.
 2. SEE SHEET NO. 1 FOR SURVEY NOTES.